

October 2005



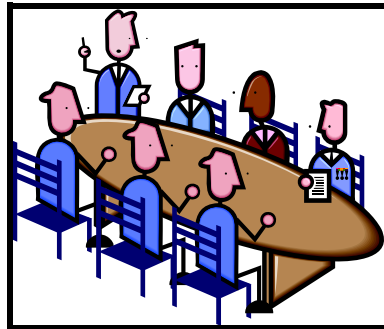
RINGWOOD COMMUNITY GARDEN INC.



2006 Committee

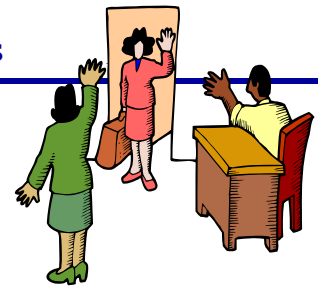
Honorary Chairperson
Honorary Secretary
Honorary Treasurer

David Puckey 9870 2294
Ralph Powell 9801 4031
Fay Beslee
Charles Schaefer
Fred Reindl
Jill Christie
Ben Clarke
Trevor Walker



Thanks to retiring Committee Members

John Jenkinson
Bob Neave and
Peter Chaloupka



And ... Goodbye to

Frank Rinarelli
Joe D'Amaro
Henny McAndrew

Plot 19
Plots 48 and 49
Plot 58

New Members



Ken Western — Plot 52
Wendy Johnson — Plot 58
Bill Ockenden — Plot 10
Greg Boyd — Plot 10



There are still several Plots available. Contact Ralph if you'd like one or know anyone interested

Inside this issue:

New Internet site	2
Are you on the Internet?	2
Time to Plant	3
Pumpkin Plots	3
The Chairman's Chatter	3
Fred's Fertilizers	4

Dates to Remember

- *Maroondah Festival* February 2006
- *Knox Farmer's Market*
On the 3rd Saturday of each month 8am — 1pm at
Wantirna P. S. Mountain Highway, Wantirna.
- *AGM August 2006*

Spring is God's way of saying, "One more time." Robert Orben



www.ringwoodcommunitygarden.org.au



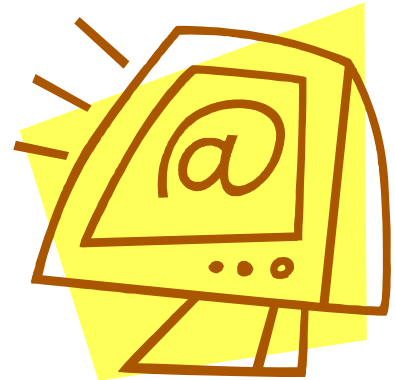
To view Newsletters and keep up-to-date with the latest happenings visit our new web site at

www.ringwoodcommunitygarden.org.au

On the Internet?

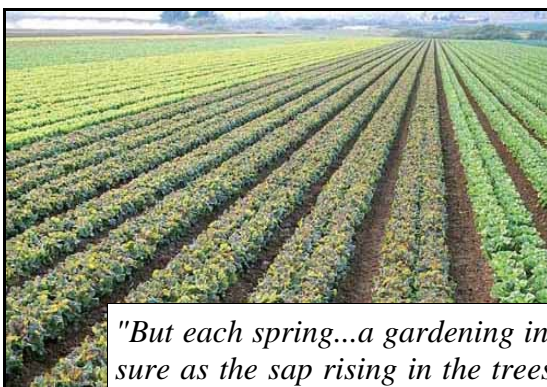
If so you can help us reduce our costs by joining the 17 members who now receive correspondence electronically.

Just leave your email address at info@ringwoodcommunitygarden.org.au



Maintenance Roster Teams

David Puckey	Ken Nicholls	Anthony Davies	Geoff & Jennifer Ellis	Dianne & Carlo Zanon
Ralph Powell	Greg Boyd	Phil McMahon	Adrian Cox	Bill Ockenden
Fay Beslee	Helene Hatton	Di Griffiths	Arthur Kollios	Colin & Pauline Carter
Charles Schaefer	Verna Schaefer	Bob Neave	Greg Best	Ray Baker
Fred Reindl	Alfred Mena	Manual Mena	Ramon Prat	Peter Chaloupka
Jill Christie	Fran Absolom	Wendy Johnson	Steve McMillan	Ken Western
Ben Clarke	Alle De Wolde	Brian Bermingham	Sam Tedesco	David Watkins
Trevor Walker	Anthony Wong	Annie Chow	Lilian Markic	Bill Price



"But each spring...a gardening instinct, sure as the sap rising in the trees, stirs within us. We look about and decide to tame another little bit of ground." -- Lewis Gantt



Gardening is a matter of your enthusiasm holding up until your back gets used to it.

The Chairman's Chatter — From David Puckey

The AGM was well attended with most members either being there or tending their apologies and with this support our group will continue to grow in numbers. Congratulations to those who returned to office or accepted office and very grateful thanks to those who retired but who gave so much time and effort over the past year. Your new committee is:

Chair David Puckey Secretary Ralph Powell

Treasurer Fay Beslee

Committee Charles Schaefer, Trevor Walker, Fred Reindl, Jill Webster and Ben Clarke

These people will also be your team leaders for the new roster system which will be put into operation this year. When it is your turn to do a job at the plot, please make an effort to complete the task during the time allocated. If we all do our little bit of 1-2 hours we will have a very functional and attractive garden area. This in turn will attract new members and make us financially viable in the long term. We need a full membership to keep our plot fees down.

The season is starting with plenty of rain to soften and deep water the ground so as soon as

your plot is drained enough you can start planting many of your summer crops. Quite a few already have a good selection of vegies in and started.




The igloo has benches and should be ready to use very shortly. Charles will put up a notice when you can start raising seedlings or putting pots of plants in there. Be sure to name your plants so we don't have mistakes occurring. The bench timber is a donation from Kew Cottages and salvaged by your committee and then reconstructed using new mesh which Charles managed to buy at a reduced cost. These are jobs the committee does on your behalf so I cannot emphasise enough that your contribution on the roster is essential rather than just paying the levy. Your time and effort is much more important than your money.

This newsletter is produced by Ralph Powell but you are all encouraged to submit text anytime as the more contributions, the more interesting will be our newsletters.

To coin a well known phrase ... 'that's your bloomin' lot.

Seasonal **PUMPKIN PLOTS** are **NOW** available, @ **\$15** each, for the growing of pumpkins, melons, marrows and squash etc., so just see a Committee Member to arrange for one.




Climbing beans	October November	Peas	September-October
Beetroot	September- November	Potato tubers	September- November
Cabbage	September- November	Pumpkin	October November
Capsicum	September- November	Radish	September- November
Carrots	September- November	Rhubarb	September- November
Celery	September- November	Silver beet	September- November
Chillies	September- November	Squash	October -November
Chinese Cabbage	September- November	Sweet Corn	October -November
Cucumber	October November	Tomato	September- November
Eggplant	October November	Zucchini	October -November
Herbs	September- November		
Lettuce	September- November		
Melons	October - November		
Spring Onions	September- November		

You need patience to be a good gardener. If you don't have patience, and you stick with gardening, it will teach you patience.

Bill Turull Jr.



Ringwood
Community
Garden

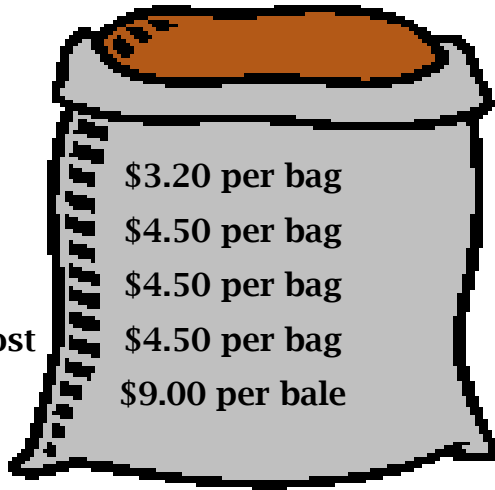


Fred's Fertilizer For All

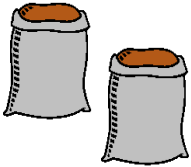
Fred Reindl (Plots 16 and 37) has made a standing offer to all members to buy discount organic fertilizers delivered to your plot free of charge.

He can get:-

Chicken manure	\$3.20 per bag
Cow manure	\$4.50 per bag
Sheep manure	\$4.50 per bag
Mushroom compost	\$4.50 per bag
Pea Straw	\$9.00 per bale



Leave a list of your requirements and a contact number in Fred's mail slot under "R" so he can arrange payment and discuss delivery.



Fred's Fertilizer and Pea Straw Orders

<u>Chicken manure</u>	<u>\$3.20</u>
<u>Cow manure</u>	<u>\$4.50</u>
<u>Sheep manure</u>	<u>\$4.50</u>
<u>Mushroom compost</u>	<u>\$4.50</u>
<u>Pea Straw</u>	<u>\$9.00</u>

<u>Quantity</u>	<u>Cost</u>

TOTAL \$ _____

Name
Plot/s to deliver bags to
Contact number

All gardeners know better than other gardeners -- Chinese Proverb

