

Winter Newsletter

June - August 2013

July can be a slower time of year in the garden. Your winter crops are planted and they just need to be tended and harvested.

Please remember to maintain your garden beds. Now is the perfect time to keep your plots and paths clean and tidy. Hard work now will be beneficial later on.

Spring is around the corner so you can start planning now.

Things to think about:

-Order your vegetable seeds now for spring planting.

-Consider planting a green manure crop. When dug into the soil in the spring, it will feed your soil and make for healthier vegetable plants.

Regards,

John.

VALE

Maree Hannan

24.01.1943 - 29.05.2013

It is with immense sadness we announce the death of Maree Hannan.

An inveterate gardener and a tireless supporter of numerous community groups she will be greatly missed.

Our deepest sympathy to Frank and family



Winter Newsletter

June - August 2013

Some winter visitors



Crested Pigeon



Willy Wagtail



Eastern
Rosella



Wood Duck



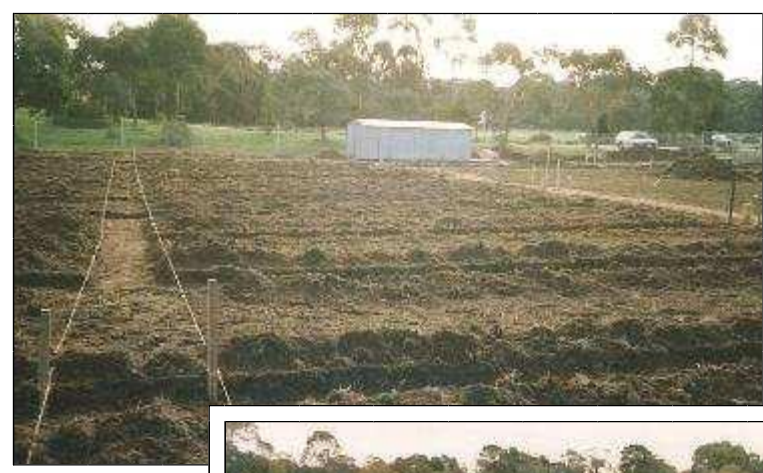
White-faced
Heron

Winter Newsletter

June - August 2013



Rotary hoed



Plots laid out



The shed floor



The shed erected

How things have changed.

Winter Newsletter

June - August 2013



Some more changes

Winter Newsletter

June - August 2013

EWG research has found that people who eat five fruits and vegetables a day from the Dirty Dozen™ list consume an average of 10 pesticides a day.



EWG'S SHOPPERS GUIDE TO PESTICIDES IN PRODUCE™

DIRTY DOZEN™

2013 DOZEN™ 2013

APPLES	NECTARINES
CELERY	IMPORTED
CHERRY	PEACHES
TOMATOES	POTATOES
CUCUMBERS	SPINACH
GRAPES	STRAWBERRIES
HOT PEPPERS	SWEET BELL PEPPERS

PLUS

- COLLARDS & KALE*
- SUMMER SQUASH & ZUCCHINI*

*PESTICIDES OF SPECIAL CONCERN



EWG'S SHOPPERS GUIDE TO PESTICIDES IN PRODUCE™

CLEAN FIFTEEN™

2013 FIFTEEN™ 2013

ASPARAGUS	ONIONS
AVOCADO	PAPAYAS
CABBAGE	PINEAPPLES
CANTALOUPE	SWEET PEAS FROZEN
CORN	SWEET POTATOES
EGGPLANT	
GRAPEFRUIT	
KIWI	
MANGOS	
MUSHROOMS	

QUESTIONS ABOUT PESTICIDES IN PRODUCE? VISIT FOODNEWS.ORG



Those who eat from the 15 least contaminated conventionally-grown fruits and vegetables ingest fewer than 2 pesticides daily.

Their Guide helps consumers make informed choices to lower their dietary pesticide load.

Winter Newsletter

June - August 2013



Eu “phobia?”

This Triffid-like *euphorbia* comes from Morocco.

Growing well over 1/2 a metre in height, it's nice to know it hasn't yet migrated here!

